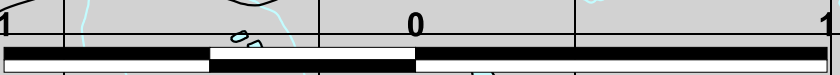
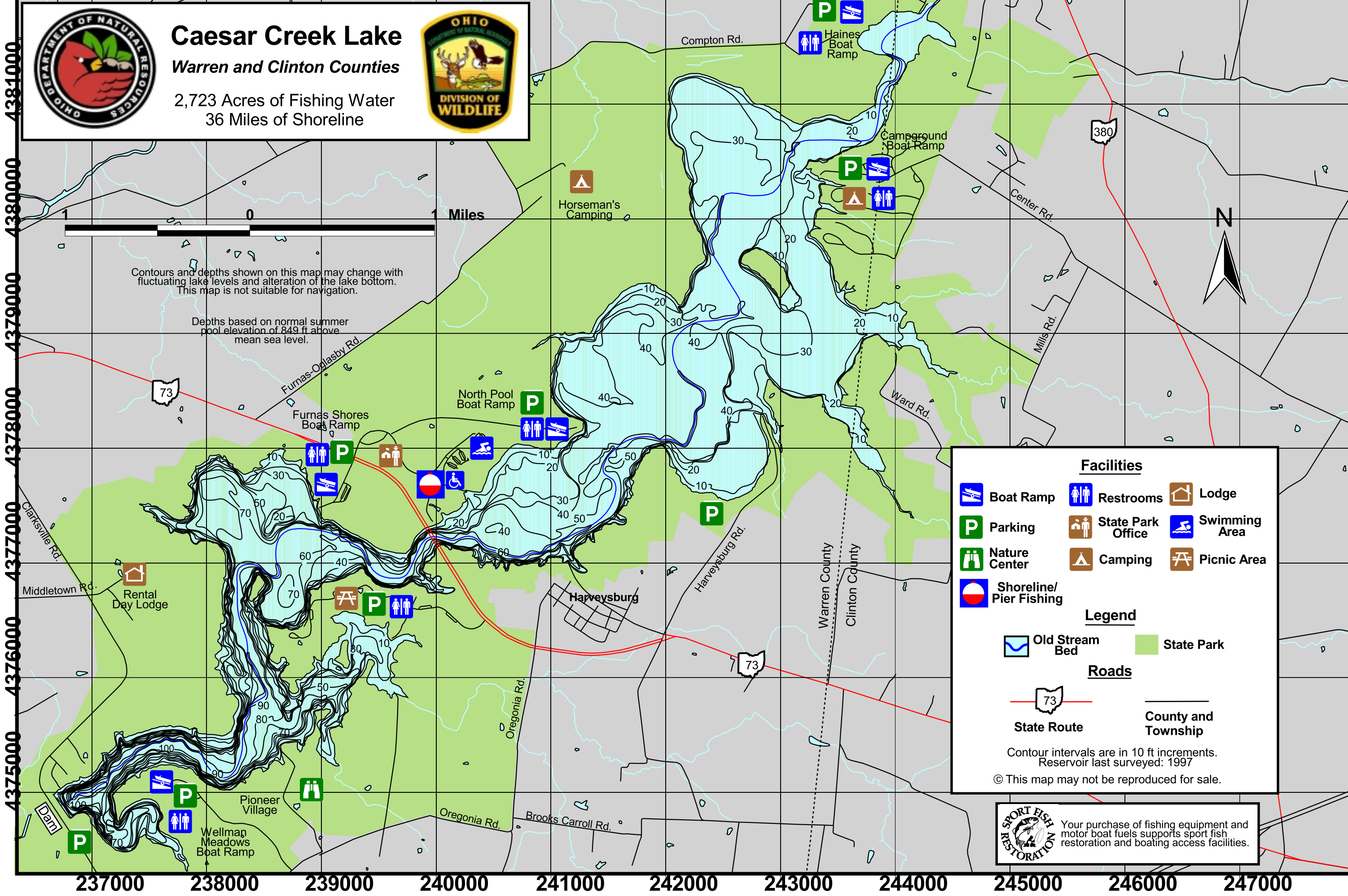




Caesar Creek Lake

Warren and Clinton Counties

2,723 Acres of Fishing Water
36 Miles of Shoreline



Contours and depths shown on this map may change with fluctuating lake levels and alteration of the lake bottom. This map is not suitable for navigation.

Depths based on normal summer pool elevation of 849 ft above mean sea level.

Facilities

Boat Ramp	Restrooms	Lodge
Parking	State Park Office	Swimming Area
Nature Center	Camping	Picnic Area
Shoreline/Pier Fishing		

Legend

Old Stream Bed	State Park
----------------	------------

Roads

State Route	County and Township
-------------	---------------------

Contour intervals are in 10 ft increments.
Reservoir last surveyed: 1997
© This map may not be reproduced for sale.

Your purchase of fishing equipment and motor boat fuels supports sport fish restoration and boating access facilities.

Caesar Creek Lake Fishing Map