

**Ohio Department of Natural Resources
Division of Forestry
FY00 Annual Report**



Table of Contents

Forestry Advisory Council	2
Division Overview	3
Highlights	4
State Forest System	7
Findlay - District 2	9
New Philadelphia - District 3	9
Athens - District 4	10
Chillicothe - District 5	11
Shawnee - District 6	11
Ohio State Forests Acres	13
State Forest Land Management	14
Recreation	17
Wildfire Protection	19
Law Enforcement	23
Forestry Technical Assistance	25
Service Forestry Assistance	25
Urban Forestry Assistance	30
Forest Health Program	33
Reforestation	36
Nursery Operations	36
Support Services	40
Fiscal Management	40
Personnel Changes	44
Information and Education	45
Table of Organization	49
Appendix A	50

FORESTRY ADVISORY COUNCIL

(As of 6 / 31 / 00)

MEMBER

GROUP REPRESENTING

Mary Donaldson

Small Private Forest Landowner

Jackson Hedges

Public

Andrew Adelman

Other Forest Industry

John Gerlach

Soil / Forest Science

Harvey Graves

Pulp and Paper Industry

Gary Kaster

Forest Recreation

William T. Lawhon

Large Private Forest Landowner

Vacant

Forest-based research

Division Overview

ODNR Division of Forestry Programs

The Division of Forestry is authorized in Section 1503 of the Ohio Revised Code (ORC). This section details many of the division's programs, from state forests' and the fire control program to the Shawnee Wilderness Area.

Included in these provisions of the ORC is the creation of the Forestry Advisory Council, an eight-member body appointed by the governor. One member is appointed to represent each of the following interests: forest-based research activities, small private forest landowners, large private forest landowners, the pulp and paper industries, other forest industries, soil science, forest recreation, and the public at large. The council advises the chief of the division and makes recommendations concerning forestry and division programs.

Based upon the ORC and advice from the council, the Division of Forestry has developed this mission statement to guide its programs:

"Our mission is to promote and apply management for the sustainable use and protection of Ohio's private and public forest lands."

The many services offered are focused to accomplish the division's stated mission. Division personnel are constantly refining the programs to provide a service that is both valuable and cost efficient.

Highlights

- **ODNR FORESTRY INITIATIVE**

At the annual Ohio Forestry Association meeting on February 26, 2000, Director Speck announced the ODNR Forestry Initiative. This initiative is a comprehensive approach by state government to promote environmentally responsible forest management on public and privately owned woodlands in Ohio. (See Appendix A for a description of the initiative.)

- **State Forest Operations**

Despite much anticipation, Y2K arrived and departed without incident.

The State Forest System expanded this year with the acquisition on 519 acres of forestland, bringing the total land base to 183,250 acres.

Important capital improvements projects included upgrade and repair to four Shawnee State Forest dams, replacement of five Shawnee State Forest bridges, closure of the former Mohican post treating facility, and restoration of several facilities from the March 1997 flood event.

The Ohio Dam Safety Organization recognized Essington Lake Dam located on Perry State Forest, as the "Best Maintained Dam, in the state category for 1999.

- **State Forest land management**

A new database to analyze and store state forest inventory data was written and tested during the fiscal year.

Recommendations were received from the Mohican AD Hoc Committee and the Division of Forestry spent time during the fiscal year developing a five-year plan for management of the forest.

In cooperation with the U.S. Forest Service and Mead Paper Corporation, the Division of Forestry is conducting research on the effects of fire and under story thinning on oak regeneration at Tar Hollow and Zaleski State Forest.

State Forest staff prepared and administered the harvest of 5,090,098 BF of wood products valued at \$1,899,623. These products were removed from 2,078 acres of state forest land (1.1% of total area) through carefully controlled sustainable harvests to achieve forest protection, production, and habitat objectives.

State Forest staff completed the salvage harvest of timber damaged in June in a 238 acre area of Blue Rock State Forest.

- **Recreation**

Three motorized trail renovation projects were submitted for recreational trails program funding.

The Dean State Forest bridle trail system was connected to the Wayne National Forest trails by the Dean State Forest Crew.

- **Wildfire Protection**

During fiscal year 2000, 1,250 fires burned 6,978 acres. An average year in Ohio is 800-1000 fires burning 4 - 5 thousand acres.

A total of 28 grant recipients were awarded \$53,777 for the purchase of wildland nomex clothing, installation of dry hydrants, leaf blowers, conversion of Federal Excess Property, and training.

\$1,356,377 worth of equipment was received and \$1,047,554 was distributed.

- **Service Forestry Assistance**

Service foresters assisted 4,145 landowners with the completion of 904 Stewardship Plans on 44,942 acres. Foresters also assisted landowners with the planting of 1,547,700 trees.

The Conservation Reserve Enhancement Program (CREP) moved forward this year, generating numerous requests for tree planting.

- **Urban Forestry**

For the 18th consecutive year, Ohio led the nation with the number of Tree City USA communities, with 222 designated communities. These communities planted 64,769 trees, pruned 112,501 trees and removed 20,163 hazardous trees for a total expenditure of \$29,246,490.

- **Forest Health**

FY 01 should complete the Asian Longhorned Beetle (ALB) project, which started this year. This program focuses on enabling tree professionals in Ohio to recognize ALB damage and also educate Ohio residents about ALB.

- **Forest Health Conditions**

Periodical cicadas emerged in a few spots around Franklin County. Black locust leafminer was severe in late summer. No beechs bark disease was reported. Gypsy Moth was invading new areas of the state as it moved south and west.

- **Windbreak Planting**

The Northwest Ohio Windbreak Program planted 29 new windbreaks totaling 113,670 row feet. Since starting in 1977, the program has been responsible for the planting of 3.4 million row feet of shrubs and trees.

- **Nursery Operations**

Sales at Zanesville and Marietta state nurseries increased slightly in FY 2000. Just fewer than 5.5 million seedlings were sold, generating \$1,169,106 in revenue. Significant sales were made to American Electric Power Company to their Climate Tree Planting Program, the Mead Corporation, and the ODNR Division of Reclamation.

- **Information and Education**

The Information and Education Section worked with ABN to produce a segment on the Forestry Initiative; and also worked with ONN to produce a segment on the Forestry Initiative.

- **Revenues**

State Forest Fund revenues amounted to just under \$1,600,000. State Forest Fund revenues accounted for 12% of the Division's total revenue.

- **Expenditures**

Division operating expenses totaled \$12,736,911 in FY 2000. \$1,686,264 was paid out in various forms to local governments.

Individual Program Accomplishments

State Forest System

STATE FOREST OPERATIONS

Despite much anticipation and planning, FY2K arrived and departed without incident.

The State Forest system expanded 519 acres with land acquisitions and exchanges from willing sellers at four state forests. State Forests now total 183,250 acres.

State Forest open houses were conducted at Athens and Chillicothe for presentation of annual or biennial plans, projects, and activities. Constituents, forest neighbors, elected officials, and others discussed issues and programs with State Forest managers and district management staff.

State Forest crews accomplished refurbishing 176 miles of known State Forest boundaries, performed maintenance on the equivalent of 1,829 miles of roadway and 1,233 miles of recreational trails, 1,258 acres of grounds maintenance, and replaced or repaired 1,093 signs. State Forests conducted 101 safety meetings and performed 188 vehicle inspections. Personnel also received pulmonary function/respirator fit testing, first aid/CPR, and voluntary lyme disease booster vaccinations.

Equipment purchases included pickup trucks and passenger vehicles, forest officer patrol vehicles, tractor, trailer, mowers, chainsaws, portable radios, and other office, communications, and support items.

Nature Works Capital Improvement projects completed or nearing completion included upgrade and repairs to four Shawnee State Forest dams (involving installation of roller-compacted concrete – a first for state-owned dams), replacement of five Shawnee State Forest bridges, closure of the former Mohican post treating facility, and restoration of several facilities from the March 1997 flood event. Projects nearing the bid stage included Athens district office replacement, and Perry APV area dam rehabilitation. State Forest Boundary Protection surveys were completed at Fernwood and Perry State Forests with additional work planned at Shawnee and Brush Creek. The ODNR Mohican-Malabar Regional Plan was nearing completion through a consultant. Perennial underground fuel storage tank site assessments/monitoring/closures continued at several locations.

ODOT Cooperative Roadway Maintenance (732) projects included completion of aggregate surfacing and bridge repair at Scioto Trail, and paving at Pike, Brush Creek and Shawnee State Forests. Replacement roadway signs were also provided through the program.

As a result of State legislation amending Ohio Revised Code fence statutes, the ODNR is required to be a participant in fencing common boundaries where adjoining lands are used to graze livestock. Applications received for such fencing at several state forests were in various stages of evaluation.

The Ohio Dam Safety Organization (ODSO) recognized Essington Lake Dam located on Perry State Forest as “Best Maintained Dam” in the State category for 1999. This was the second annual ODSO Safety Awards presentation, which requires compliance with ODNR dam safety regulations, and largely credited to vigilance of local staff.

State Forest personnel accomplished a myriad of diverse activities, including forest land management, recreation facility maintenance, wildland fire protection (state and private wildlands), law enforcement (state forest rules and forest fire), wildland fire prevention and training, and forestry information and education, as well as the necessary chores and organizational demands of bureaucracy, human services activities, meetings, etc.

***EACH RESPECTIVE DISTRICT HAS PROVIDED THE FOLLOWING
NARRATIVES:***

Findlay - District 2

Maumee State Forest hosted the annual District 2 Fire Protection Meeting in February. Maumee employees assisted in wildfire suppression on Interagency assignment in California and in Ohio at Shawnee State Forest. Dry weather conditions contributed to an active fall and spring fire season resulting in 78 fires reported burning nearly 90 acres.

Six sites were monitored on the forest for gypsy moth using burlap tied around the trunks of the trees. No caterpillars were found. TransMontaigne Pipeline Company cleared trees on their right-of-way in Lucas County. The Maumee forest crew salvaged 33,365 board feet of logs from storm-damaged areas.

The Memorandum of Understanding for the Muck Farm site on Maumee State Forest was reviewed and updated by the Divisions of Forestry, Wildlife and Natural Areas and Preserves. Three prescribed burns were conducted on the Forest. Division of Forestry Staff conducted a prescribed burn to enhance a 1/4 acre blue lupine site, and a 3 acre wet prairie area. The Division of Natural Areas and Preserves conducted a 15 acre prescribed burn to enhance a wet sedge meadow area.

Numerous Special Use Permits were issued, including 15 for the training of sled dogs at Maumee State Forest.

New Philadelphia - District 3

Beaver Creek State Forest received increased attention through Division representation at the Wild and Scenic Rivers Advisory Council and Columbiana County Sportsmen's Association meetings. Forestry and Wildlife law enforcement personnel have been meeting to develop strategies for dealing with illegal APV use and hunting violations. Some boundary work has been completed in anticipation of the spring hunting season.

Wayne and Richland County OHC chapters donated time and materials to repair and install new hitching posts at the Mohican-Memorial horse staging area. The Division coordinated a multi-agency search (employing incident management system) for what resulted in a suicide at Mohican-Memorial State Forest. Forty-nine members of the U.S. Naval Sea Cadet Corps completed their third year of work at Mohican-Memorial, helping with trail work, painting and cleaning vehicles.

An additional 5,000 trees were planted at Perry State Forest as part of the annual STEP program with the Perry SWCD. Negotiations to resolve a boundary fence issue continue with a neighbor adjoining the APV area and a State Representative.

Boundaries at Perry (APV area) and Fernwood (main area) State Forests were surveyed and marked. The Perry survey was accomplished with State Recreational Vehicle funds. As always, completed surveys reveal other boundary issues that must be addressed.

The John Hug Award, the highest given by Project Learning Tree in Ohio, was awarded to New Philadelphia District 3 and Service/Urban Foresters. As part of the Director's Forestry Initiative, District 3 continues to use and monitor the effectiveness of biodegradable lubricants in equipment. Employees from ODOT District 11 and ODNR Divisions of Forestry, Mines & Reclamation and Litter Prevention & Recycling received a glimpse of the daily work performed by other agencies during conduct of an open house at New Philadelphia.

Athens - District 4

The Hocking State Forest Bridle Trails received major work by forest personnel in the summers of 1999 and 2000. A trail evaluation was conducted to document problems and prioritize work projects. A new gas storage well was drilled in Hocking State Forest near Cantwell Cliffs, and included an associated pipeline. The proposed Marathon-Ashland Petroleum pipeline project through Richland Furnace and Hocking State Forests continued in the planning phase with site-specific details being discussed to mitigate potential impacts.

The Zaleski State Forest Horse Camp had designated sites upgraded and a Special-Use area added. New signs were placed, trailer pads graveled and lime dust put around horse tie areas. Zaleski State Forest received a new trail dozer, funded partially through the Recreational Trail Program, which began maintenance work on Richland Furnace APV trails. The PBS television show "Trailside" was filmed on the Zaleski Backpack Trail.

Due to correction of a property line boundary at Shade River State Forest, personnel reconstructed a 1600-foot boundary fence, which had been previously installed by a neighboring landowner.

Division of Forestry personnel received a "Certificate of Appreciation" from the Department for their efforts in controlling a forest fire that threatened the newly renovated Lake Hope State Park cabins. The first Annual Forestry Field Days was held at Zaleski State Forest in the Spring of 2000 for all Vinton County 4th grade students.

The Divisions of Wildlife, Soil and Water and Forestry all presented programs to educate students on the outdoors and conservation. The Zaleski sawmill was one of many demonstrations. District personnel promoted the Division through the Paul Bunyan

Show, Hocking Fall Color Tour, R.O.A.R. Days, Cleveland Sports Show and miniature sawmill demonstrations. Recreational trails, Shooting Range, Backpack Camps, Horse Camps, and Rock Climbing Area all received tremendous use during the year.

Chillicothe - District 5

With a number of personnel vacancies in the district and the development and implementation of a new district structure, our staff did quite well in accomplishing most of their objectives. Most of the much needed facility maintenance was completed in a timely fashion.

The district tested a new internal review process for all proposed timber sales. This process involved developing an Internal Review Committee composed of a number of employees with a wide variety of experiences to review all proposed timber sales. This committee provided input that was considered and incorporated into the management plans prior to presenting the plans to the public during an Open House. The Open House was held in January with about 20 people attending and providing comments.

Mineral resources continued to be productive at Tar Hollow State Forest with three wells actively producing gas. One well was marginal and produced a lot of brine creating a need for the construction of a new brine pipeline between well site 4 and well site 3. Plans are being made for additional exploration.

The Division entered into a partnership with the USDA Forest Service to participate in a 10-year nationwide study to examine the impacts of prescribed fire and harvesting in mixed-oak forests. One of the study sites will be at Tar Hollow State Forest. Each study site has four units - a control, an area that will be harvested, an area that will be burned, and an area that will be harvested and burned. Upon completion this project will provide data to assist land managers to understand the impact(s) that fire can have on an ecosystem. District 5 staff members completed the marking of the harvest areas and the areas were marked as a thinning from below. The harvesting sites will be sold and harvested during FY2001.

Shawnee - District 6

A significant occurrence has been the transfer of administrative functions of Brush Creek State Forest from Chillicothe District #5 to Shawnee District #6. The change recombines work units located within the same counties, continuing the process of focusing staff and equipment at district work centers for increased efficiencies. The Brush Creek State Forest office remains as a satellite operation. Two critical land acquisitions at Brush Creek help reduce boundary maintenance and allow for more efficient management opportunities.

With a severe drought firmly in place, fire season started in July instead of October, providing a number of major fires. The fire of the year occurred in Cave Lick on

November 19 when a strong, fast-moving cold front with winds in excess of fifty miles per hour pushed a trash fire into the woods. Within twelve hours the fire consumed 460 acres and exhibited extreme behavior in terms of spotting and rate of spread. The Cave Lick fire was investigated and the person responsible was convicted and fined.

The Division of Forestry also received \$5400 restitution for suppression efforts. Frequent rains throughout spring brought the drought to an end in June.

Law enforcement targeted illegal use of All Terrain Vehicles (ATV's, four-wheelers) within the forests. Forest Officer Clark Carson was recognized as the Department's Employee of the Month in October and also received the Director's Achievement Award. Forest employees received training in the operation of ATV's used to perform their maintenance work. Backpack trail use increased significantly after an article appeared in Backpacker magazine, and the trail map was updated.

A high water event occurred on Feb. 18, testing the capabilities of the newly renovated dams when several of the lakes came close to overtopping, but the structures held, and the waters receded. Forestry crews installed twelve pipe gates in place of cables at strategic forest road locations where motor vehicle use is restricted. Two wooden box culverts were installed on forest roads, and a large slip was repaired on Nace's Run. The Shawnee Wilderness Area management plan was updated as required by law, and a private contractor removed Twin Creek fire tower. After 24 years serving as District Forest Manager, Stan Richards retired.

Ohio's State Forest Acres
(Period 7/1/99 – 8/5/00)

STATE FOREST	Acres loss/gain	TOTAL ACRES	County
Beaver Creek		1,122	Columbiana
Blue Rock		4,578	Muskingum
Brush Creek	254	13,461	Adams, Pike, Scioto
Dean		2,745	Lawrence
Fernwood		3,023	Jefferson
Gifford		320	Athens
Harrison		1,345	Harrison
Hocking	198	9,464	Hocking
Maumee		3,103	Fulton, Henry, Lucas
Mohican-Memorial	-27,+ 54	4,525	Ashland
Perry		4,567	Perry
Pike		12,086	Pike, Highland
Richland Furnace		2,528	Jackson, Vinton
Scioto Trail		9,600	Ross, Pike
Shade River (1)		2,760	Meigs
Shawnee	41	63,295	Adams, Scioto
Sunfish Creek		637	Monroe
Tar Hollow		16,120	Ross, Vinton, Hocking
Yellow Creek		756	Columbiana
Zaleski (2)		27,215	Vinton, Athens
TOTALS (net)	520	183,250	

- (1) Includes Meigs Sand Abatement Project
- (2) Includes Waterloo Forest

STATE FOREST LAND MANAGEMENT



The Division of Forestry's Land Management Program incorporates multiple use forest management techniques to provide the widest range of forest benefits to Ohio's public. The program emphasizes clean water, wildlife habitat, dispersed backcountry recreation, rare species management, timber production, and mineral management. The program is designed to demonstrate the benefits of long-term forest management to Ohio's private and public landowners

Forest Harvests	MBF	Tons	Revenue
Hardwood Stumpage	4,134,158	5,167	1,710,626.65
Hardwood Products	43,140	70	11,292.17
Pine Stumpage	57,933	2,487	18,972.01
Pine Products	3,925	0	1,040.29
Timber Damage	851,752	3,547	157,691.85
Totals	5,090,908	11,271	1,899,622.97

A new database to analyze and store state forest inventory data was written and tested during the fiscal year. It will establish the standard methodology employed by the land management foresters during their cruising. Previously timber cruisers were primarily conducted for prescription purposes with little effort going toward updating forest conditions and inventory data.

Recommendations were received from the Mohican Ad Hoc Committee and the Division of Forestry spent time during the fiscal year developing a five-year plan for management of the forest. The first step in that process was to develop appropriate guidelines for the land management zones developed by the committee. A draft of these guidelines will be presented to the Ad Hoc Committee for review when the draft five-year plan is completed and submitted. This is expected to occur during the FY 01.

Forest health plots were not re-measured during the fiscal year. A district 5 forester in the land management section collected all of the ozone plot data statewide. A few timber appraisals were conducted by foresters in the section for land acquisition purposes. The purchase of Beaver Creek State Forest was finalized; but the boundaries have not yet been surveyed and established.

The forester at Shawnee State Forest left that position to become the Hocking State Forest Manager. He vacated that position also before the end of the fiscal year to return to college. The vacancy created at Shawnee was filled through inherent right and then vacated again, when that forester decided to become a watercraft officer. The vacant manager position at Gifford was re-classified as a forester and filled during the year. With the District V re-organization, Brush Creek State Forest was placed under the Shawnee District. The Brush Creek manager was named Land Management Program Manager. The Assistant District Forester in District V was put in charge of the districts land management program.

In cooperation with the U.S. Forest Service and Mead Paper Corporation, the Division of Forestry is conducting research on the effects of fire and under story thinning on oak regeneration at Tar Hollow and Zaleski State Forest. The timber marking was accomplished during FY 2000 and the thinning and burning will take place during FY 2001. The study will be conducted over a ten year period and involves Ohio State University and Ohio University as well as the before mentioned organizations.

District 5 tested a review process for proposed timber harvests. Part of the process involved a committee of several DOF employees with a variety of job duties, expertise and skills. Input from this part of the review process was incorporated into the management plans prior to presentation to the public at the District Open House. This process may be adopted statewide for state forest timber management.

The Land Management Forester and Forester in District 3 spent the better part of the fiscal year administering the salvage harvest of tornado-damaged timber at Blue Rock State Forest. During the 2+-year period it took to harvest this timber, 2.5 MMBF were salvaged. 33.365 MBF of storm damaged timber were harvested at Maumee State Forest

Forest Management Activities	
Activity	Acres
Tree Planting	143
Timber Stand Improvement	504
Cruising	5,821
Marking	1,787
Harvesting (selective)	1,821
(clearcut)	257
Wildlife openings	27
Timber Sales Closed/BMP's	999
Forest Inventory	8,393

RECREATION



Recreational Users by Activity	
Activity	Numbers of Users
Backpackers	7,903
Horse/Campers	8,334
Family Campers	1,356
Hunter Campers	870
APV Riders	8,300
Snowmobilers	100
Horse Riders	23,363
Hunters	19,300
Hikers	42,721
Gun Range Users	5,365
Mountain Bikers	1,747
Harvesters	2,133
Others	15,113

State Forest recreation is primarily dispersed backcountry recreation. The state forests offer nearly 600 miles of trails, most of which are designed to accommodate a number of uses including hiking, back packing, horseback riding, APVing and mountain biking.

Three motorized trail renovation projects were submitted for recreational trails program funding. All three projects were rejected and the motorized portion of the RTP funds went to Summit County for land acquisition. The county metro park system plans on developing APV trails. While disappointing for the DOF, there are no other APV trails in northeast Ohio.

APV rallies, fall color tours, sport show activities and forestry field days were hosted by and or attended by DOF personnel. These activities, and open houses, are our best opportunities to solicit the input of State Forest users.

The Dean State Forest bridle trail system was connected to the Wayne National Forest trails by the Dean State Forest Crew. The project was delayed for a couple of years while the Wayne National Forest folks looked for an alternative route to by pass a rare plant community.

Fifteen special use permits were issued for sled dog training at Maumee State Forest.

Eight of our state forests either surround or are adjacent to a state park. They are Blue Rock, Hocking, Mohican, Pike, Scioto Trail, Shawnee, Tar Hollow, and Zaleski. Ohio outdoor enthusiasts heavily visit these state forests/state park combinations. This visitation is estimated at about 4.5 million visitors annually.

WILDFIRE PROTECTION



Ohio's fire seasons were very active, the direct result of the worst drought in 50 years. The Division was anticipating a busy spring 2000 season and developed a response plan during the winter. A change in the weather pattern returned periodic rains to the state and ended the fire season by mid-March.

The wildland fire statistical database that was developed 2 years ago is functioning as it was designed. During fiscal year 2000, 1,250 fires burned 6,978 acres. An average year in Ohio is 800-1000 fires burning 4-5 thousand acres.

About six years ago, the Division of Forestry recognized the need to develop a pool of experienced firefighters for in-state and out-of-state assignments. This pool has grown to about 125 and remains fairly consistent from year to year. The fire cache will support approximately forty firefighters. The real limiting factor is a shortage of qualified crew bosses and efforts continue to train individuals to this level.

The Ohio Interagency Coordinating Group continues to function very well. The group tries to meet twice annually or as needed. All participating agencies have benefited from this arrangement through joint training and common dispatching for western assignments.

The Division continues to work closely with the National Weather Service. This relationship has resulted in timely and accurate daily fire weather forecasts during our spring and fall fire seasons. Local weather information is obtained through the FTS

weather station owned by the US Forest Service, but located at Dean State Forest in southern Ohio.

Training of State and Local Wildfire Forces

All the current information for each individual has been entered into the IQS database. The anticipated training of additional Division employees in the use of IQS has been delayed until the final version is completed.

Courses conducted in-state this year include:

Course	Number of Courses	Number of Students
S130/190	1	45
S-290	1	35
Annual Refresher	5	100
Basic 6 hr. Fire Dept.	29	463

The Mid-Atlantic Compact also conducted several training sessions attended by Ohio personnel. They are:

Course	Number of Ohio Students
"Use of Fire as a Management Tool"	13
S-300 Extended Attack IC	10

Technology Transfer

The Division of Forestry, in cooperation with the Ohio Fire Academy, continues to instruct teach Class "A" Foam classes in Ohio and occasionally outside Ohio. The Division of Forestry provides the Type 2 CAFS engine and the Fire Academy provides the instructors. Three courses are being offered and following is the number conducted during this grant period:

Class	Number of Classes	Number of Students
Awareness	11	163
Operations	2	36
Application	12	165

Dry hydrants are promoted through Volunteer Fire Assistance Grants.

Volunteer Fire Assistance Grants

A total of 28 grants recipients were awarded \$53,777.00 for the purchase of wildland nomex clothing, installation of dry hydrants, leaf blowers, conversion of Federal Excess Property, and training. The applications were scored using a grading schedule that attempts to identify the most needy departments based upon operating income, fire load, previous grants received, current grant request, populations density, and composition of the fire department. The grant recipients were located in 24 counties.

Federal Excess Property

The FEPP Program remains strong in Ohio. The amount of property available has decreased over the last year, but there is still plenty of activity. The Ohio Rural Fire Council initiative described below has generated considerable interest in the program from around the state and also results in some additional administrative workload.

Prescribed Fire

The Prescribed Fire Working Group is well established and has met four times. There is considerable support for this program from all the agencies and organizations involved. The opposition is very limited at this time and attempts are being made to resolve the issues in a positive manner.

Accomplishments to date include Steering Group Objectives, draft Certification Criteria, draft Course Curriculum, and a draft Burn Plan. Currently members are working on lesson plans for the course curriculum. The first course should be ready for presentation by the fall of 2001.

Ohio Rural Fire Council

The Council has not been able to gain the support needed to establish an Ohio Legislative Fire Services Caucus. This project has been tabled for the immediate future and the Council is concentrating efforts on the statewide expansion of the Federal Excess Property Program. The Division of Forestry is providing FEPP to fire departments within the fire protection area and the proposal would take the program statewide and add three new employees. These new employees would also provide wildland fire training to the remainder of the state. The Council has prepared a full-color brochure for presentation to state legislators in the fall of 2000 and spring of 2001.

In support of this initiative, the Council sponsored a one-day Federal Excess Property Workshop at the Ohio Fire Academy April 15, 2000. The event was very successful and over 110 firefighters from around the state attended. The morning session was an overview of the services offered by the Fire Academy and the afternoon was devoted to FEPP. Between 15-20 pieces of converted FEPP vehicles were on display in the parking area for attendees to view.

Incident Command System

The Incident Command Steering Committee has been relatively inactive for the last 2 years when leadership of the Ohio Emergency Management Agency changed. The leadership has changed again and a renewed emphasis has been placed on ICS in the state.

LAW ENFORCEMENT



Fire Investigations

Between the period of July 1, 1999 and June 30, 2000, 1,250 fires burned 6,978 acres. The Division of Forestry is limited by insufficient personnel time to physically investigate each fire. Overall, 386 fires were investigated by physically going to the site. In some Districts, every fire is fully investigated. Each fire report is processed for payment to the fire departments so each report receives some review.

Training

Training session coordinated by Columbus are as follows:

- The annual in-service was held at OPOTA February 22, 23, and 2000. Topics included public records law, legal update, and report writing.
- Annual weapon qualifications were held May 16, 17, and 18, 2000.
- A one-day session was held at the Fire Academy September 8, 1999. Topics were haz-mat refresher and Forest Officer Authority and Jurisdiction.
- Each officer received outdoor shooting scenario training October 5,6,and 7. Night shooting exercises followed the scenario.
- SIT team members attended 3 days of Death/Homicide training at OPOTA December 15-17.

The Districts also schedule various training sessions such as first aid, CPR, and shooting simulation.

Special Operations

Special operations this year were conducted to apprehend illegal APV riders.

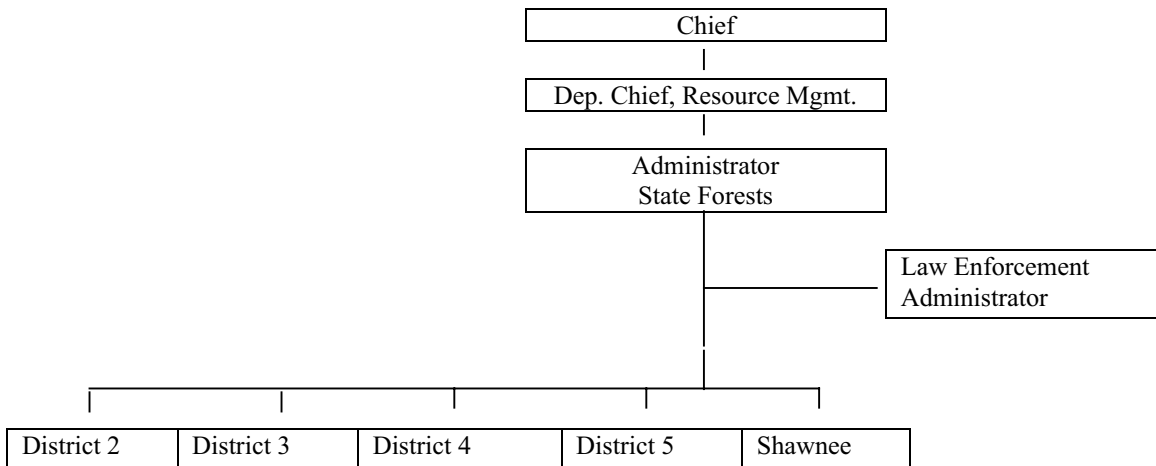
Officer Awards

Clark Carson, Forest Officer at Shawnee State Forest, received the employee of the month award for December 1999. Clark was on his way to a meeting in Columbus and stopped at an accident scene near Chillicothe. The driver that caused the accident attempted to flee the scene and was apprehended by Clark in a nearby creek bed. The driver was later charged with aggravated vehicular homicide along with drug possession and other serious traffic violations.

Other Duties

Forest Officers are involved in many activities and investigated 255 miscellaneous incidents. They also assist with fire department training (wildland fire), federal excess property inspections, and various youth and adult programs.

Table of Organization



Law Enforcement Actions	
Citations (SF/Fire)	222/124
Warnings	534
Court Visitations	160
Visitors Assists	9,019

FORESTRY TECHNICAL ASSISTANCE



Service Forestry Assistance

This fiscal year has been another year of change for the Service Forestry Program. The program received additional funding for two new positions and also had a number of personnel changes within the ranks of the program.

Funding for two additional positions within the Service Forestry Program was provided by the state legislature in this year's forestry budget. The funding was utilized to create a new service forestry project in southwestern Ohio and a new watershed forester position in northwestern Ohio. The watershed forester will be working with the new Conservation Reserve Enhancement Program.

The Conservation Reserve Enhancement Program (CREP) has moved forward in its first year and is generating a lot of request for tree planting. The program has provided some real cash incentives for landowners and they are responding. The program has some emphasis on riparian tree planting, bank stabilization and windbreak plantings in the Erie Basin of northern Ohio. The program has only been in place for less than a year, but the number of landowners inquiring about tree planting has dramatically increased.

The District 8 foresters have worked closely this past year with the Ohio Forestry Association (OFA) Logging Standard's Council to implement a training package for loggers that are being re-certified by OFA under the Master Logger Program. The training package emphasizes the silvicultural aspects of logging. The training package was successfully used throughout the year and received good reviews from the logging community.

During the past year a number of changes were made in the project boundaries of the service forestry projects located in the southeastern part of the state. Adjustments were made in six projects in an effort to balance the workloads of the Service Foresters and provide more timely service to those landowners within those projects.

Two personnel changes occurred during the fiscal year. The forester in the Utilization and Marketing position retired and the Service Forester in the New Philadelphia West project resigned to become a private consultant. Both positions are in the process of being filled.

THE FOLLOWING ARE THE SERVICE FORESTRY ACCOMPLISHMENTS FOR THE PAST FISCAL YEAR

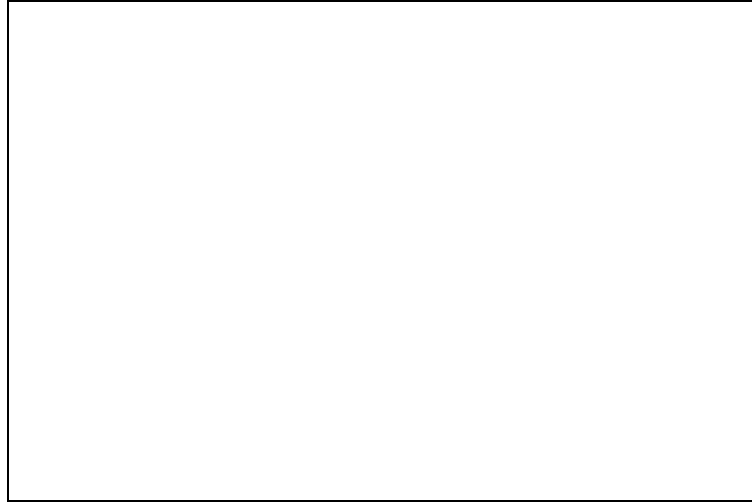
Landowner Assists	4,145
Stewardship Plans (#)	904
Stewardship Plans (Acres)	44,942
Referrals to Consultants	480
Timber Marked	6,600,000 bd. Ft.
Tree Planting	1,547,700 trees

RESULTS OF THE FOREST INCENTIVES PROGRAM FIP FOR FISCAL YEAR 1999

Tree Planting	
Cost-share Dollars Available	\$85,366
Number of Trees Planted	486,500
Number of Acres of Trees Planted	695

Timber Stand Improvement	
Cost-Share Dollars Available	\$48,121
Number of Acres of Timber Stand Improvement	969

NORTHWEST OHIO FIELD WINDBREAK PROGRAM - 2000



The spring of 2000 marked the 24th planting season for the Northwest Ohio Field Windbreak Program. Twenty-nine (29) new field windbreaks were planted in seven Northwest Ohio counties covering a total of 113,670 row feet or 21.5 miles (Figure 1). Crawford and Wyandot counties were added to the Northwest Ohio Windbreak program in 2000, increasing the number of counties served to 17.

Five windbreaks planted in 1999 had a survivability less than 75% and needed to be replanted in 2000. The planting crew from Maumee State Forest used Thirteen (13) planting days in March and April to get the 29 new windbreaks and 5 replants in the ground.

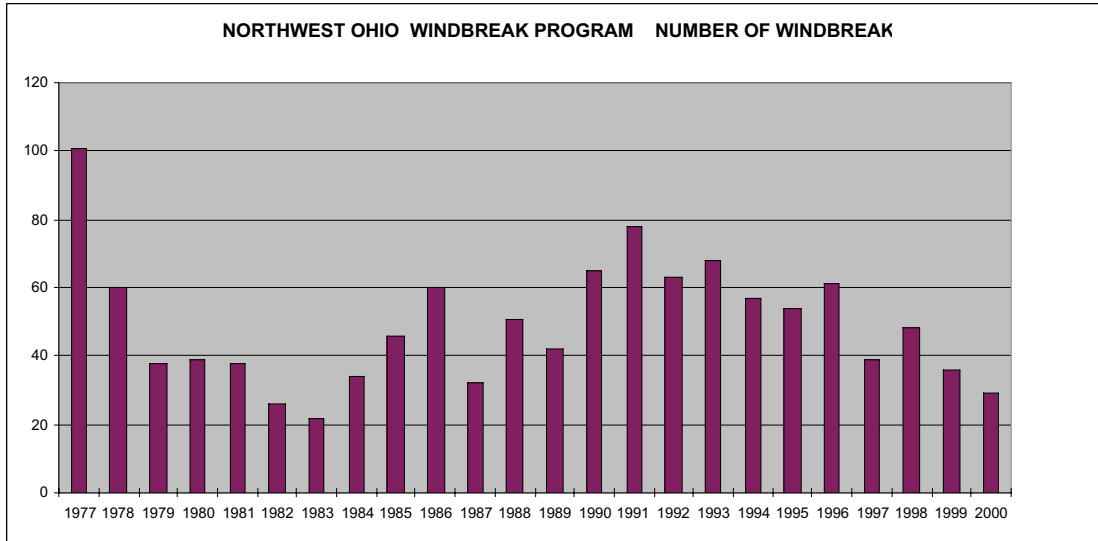
Over 15,600 seedlings from 13 different species were planted in the new windbreaks in 2000 (Figure 2). There has been increased interest in multiple row field windbreaks. Thirty percent of the seedlings planted in 2000 were conifer species. Seventy percent were hardwood trees and shrubs.

Since 1977 the Northwest Ohio Field Windbreak Program has proven to be a successful conservation program for farmers, conservation groups, and the local Soil & Water. Over the past 24 years, more than 3.4 million row feet of shrubs and trees have been planted through the windbreak program. Figure 3 summarizes the windbreak planting efforts over the past 24 years.

County	Row Feet
Crawford (2)	8,530
Fulton (9)	40,450
Henry (1)	2,600
Ottawa (3)	6,010
Sandusky (4)	9,210
Seneca (2)	3,860
Wood (8)	43,010
Total	113,670

2000 WINDBREAK PLANTNG BY SPECIES	
Silky Dogwood	25%
Sargent Crabapple	12%
Norway Spruce	12%
Black Chokeberry	11%
American Plum	11%
White Pine	9%
American Arborviate	7%
Pin Oak	6%
English Oak	3%
Black Alder	2%
Eastern Red Cedar	1%
Austrian Pine	1%

OVERALL WINDBREAK ACCOMPLISHMENTS



Number of Total Windbreaks Planted			
1977	101	247,339	46.8
1978	60	145,210	27.5
1979	38	82,680	15.7
1980	39	70,741	13.4
1981	38	72,773	13.8
1982	26	48,882	9.3
1983	22	68,532	13.0
1984	34	83,358	15.8
1985	46	107,745	20.4
1986	60	122,418	23.2
1987	32	67,350	12.8
1988	51	164,291	31.1
1989	42	113,234	21.4
1990	65	170,006	32.2
1991	78	253,162	47.9
1992	63	206,078	39.0
1993	68	196,998	37.3
1994	57	196,220	37.2
1995	54	209,094	39.6
1996	61	199,312	37.7
1997	39	167,978	31.8
1998	48	188,250	35.7
1999	36	148,980	28.2
2000	29	113,670	21.5
Total	1,187	3,444,301	652.3

URBAN FORESTRY ASSISTANCE

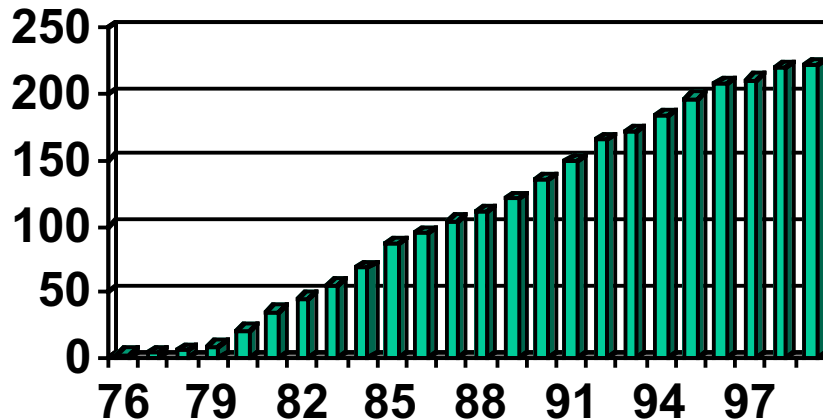


After a successful 1999 statewide program review, the Urban Forestry Program spent 2000 implementing client and non-client approved recommendations. While the 1999 review essentially validated the program's purpose, objective, and strategies, it did highlight a general concern by Ohio communities for their aging forests as well as a perceived lack of administrative support. The Urban Forestry Program will attempt to address both concerns through a statewide urban forestry awareness effort using a video, PSAs, and meetings.

The six regional urban foresters remain the primary means of delivering urban forestry support to Ohio communities. By providing organizational and technical aide, Ohio's Urban Forestry Program enables communities to develop, support, or strengthen comprehensive tree care programs that address their local needs. Helping communities enhance the quality of life through the proper management of their urban forests continues to drive the actions of this program.

The National Arbor Day Foundation's Tree City USA program is one way to measure the state's urban forestry effectiveness. As a means to recognize cities and villages that competently manage their urban forest resources, the National Arbor Day Foundation initiated the Tree City USA program in 1976. For the 18th consecutive year, Ohio, with 222 designated communities, remains the leader in this national award program.

TREE CITY USA in OHIO 1976-1999



(Ohio's Urban Forestry Program started in 1979)

Using over 63,000 volunteer hours, these 222 cities and villages planted 64,769 trees (no seedlings included), pruned 112,501 street and park trees, and removed 20,163 dead, dying, and hazardous trees, for a total expenditure of \$29,246,490.

The first round of the Bicentennial Legacy Tree Planting Grant Program was implemented. Through a partnership with the Ohio Environmental Protection Agency (OEPA), 25 Ohio community projects were approved. This initiative is part of Governor Bob Taft's target of planting 2 million trees by the year 2003. The effort is funded using OEPA air pollution fines.

The Urban Forestry Program remains committed to facilitating information via the Internet. The Program's web site is constantly monitored and updated for the benefit of clients and potential clients. Last year the site received 25,440 individual hits. The Urban Forestry Program's homepage can be accessed at <http://www.hcs.ohio-state.edu/ODNR/Urban/Urbanfor.htm>.

The above activities and accomplishments are enhanced with input volunteered by the *Urban Forestry Advisory Committee*. This cross-section of Ohio's green industry and user groups, advises on current programs and policies, recommends new directions and opportunities, provides feedback on administrative initiatives, and advocates the program's mission.



Urban Forestry Advisory Committee Meeting

FOREST HEALTH PROGRAM



Programmatic:

State Forest Monitoring was suspended this year after each plot had been established and revisited one time (two data collections at each plot). In 2001 the annualized FIA/FHM plots are scheduled to be established/collected in Ohio. The state forest plots will be collected during the FIA/FHM plot collection. Ozone data was collected. Ozone symptoms could be found this year on about half of the plots.

An Asian Longhorned Beetle (ALB) outreach project was started this year. The project will be completed early next year. It focuses on enabling tree professionals in Ohio to recognize ALB damage and also educate Ohio residents about ALB. Urban Forestry dollars have also been incorporated into a small scale ALB survey in cooperation with USDA APHIS. APHIS has identified some high-risk introduction sites in the state. A commercial arboriculture firm has been contracted to climb trees and use bucket trucks to survey trees in these high risk areas. APHIS surveys are ground based, so our surveys will compliment theirs and also tie in with the outreach project.

The mycorrhizal red oak plots at Fernwood State Forest were evaluated in May, 2000. Overall seedling survival was poor due to droughty conditions at planting (April 1999). P.t. inoculated red oak seedlings, red oak seedlings with a naturally occurring mycorrhizal association, and non-mycorrhizal red oak seedlings were planted in test plots. The seedlings with the naturally occurring mycorrhizae had the worst survival rate. The survival rate of the P.t. seedlings appeared to be slightly better than the non-mycorrhizal seedlings.

Held the annual Forest Health Meeting for Division field staff and forest health partners at Canter's Cave Camp (about 75 attended). Continued disseminating forest health information through articles in the *Ohio Woodland Journal*.

Continued serving on the Cuyahoga Valley Communities Council's gypsy moth task force. This group really seems to help affected communities stay organized and helps communicate gypsy moth program information to communities.

Forest Health Conditions:

Cool, moist conditions prevailed in 2000, allowing anthracnose, apple scab, and other leaf diseases to rebound this year. For the past year, Ohio rainfall has been almost 1 inch above normal.

A Forest Health aerial survey and the gypsy moth aerial survey were coordinated during the last 2 weeks of June. Gypsy moth defoliation totaled about 23,200 acres this year. The Forest Health survey revealed yellow poplar discoloration possibly due to Y.P. weevil activity in the area. The affected area was north of Cambridge, South of New Philadelphia, and east of I-77. Pockets of white pine mortality were also evident.

Small pockets of white pine appear to be dying again. This problem was identified in the early 90's and then disappeared for a few years. It's flaring up again. Pine bark adelgids have also been more numerous over the past 2 years. Coincidental? I'm not sure.

Aphid feeding was heavy on yellow poplar and white oak this year. Sooty mold was prominent in many southern Ohio forests in June because of the aphid activity. White oak leaves were severely cupped starting in July. Several calls were received regarding beech leaf curling, which was probably related to aphid activity.

Periodical cicadas emerged in a few spots around Franklin County (Columbus area). It is not known yet whether these were stragglers from last year, early birds prior to the expected 2004 emergence, or the beginning of a new brood.

Eastern tent caterpillar populations were high this year. Many cherry trees were completely defoliated especially in the southern half of the state.

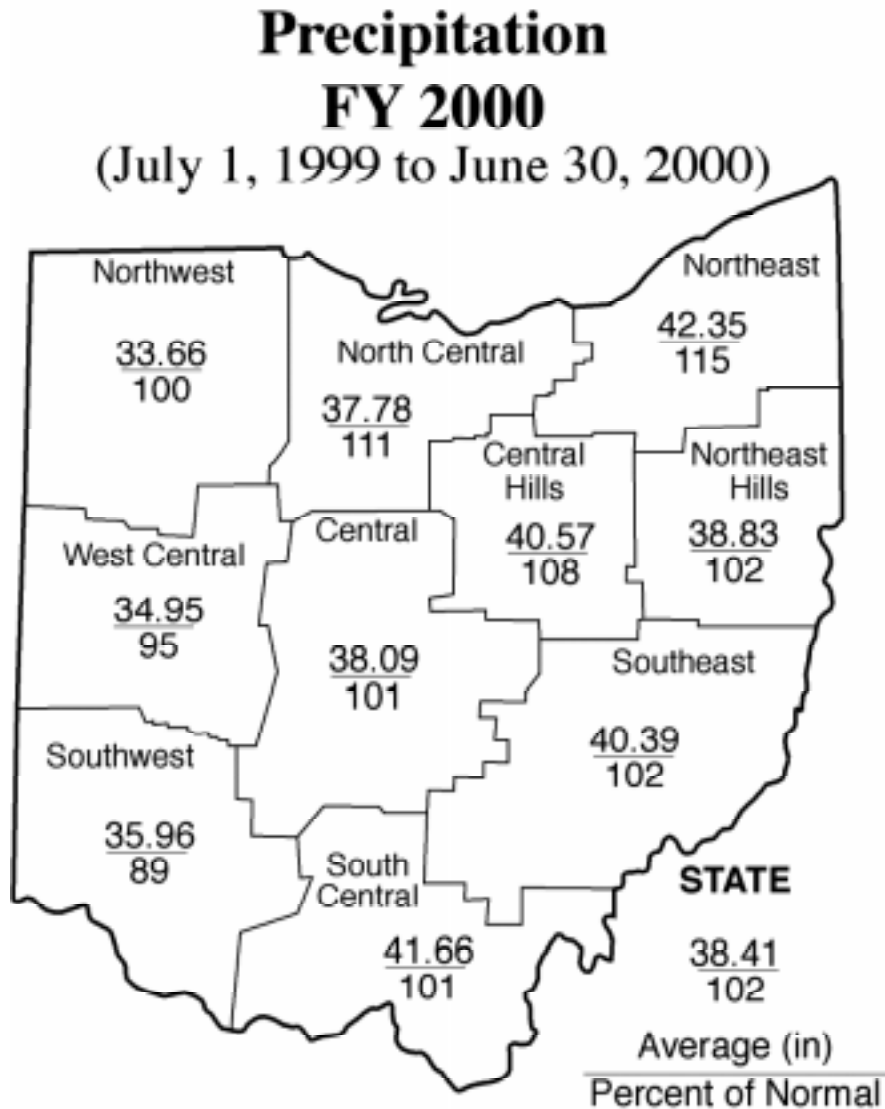
Black locust leafminer damage was severe in late summer. This activity generated numerous phone inquiries and sent us scrambling for printed information on this insect. We featured the insect on our website for about 3 weeks.

Oak wilt killed numerous trees in Northern Ohio this year. This is not typically a big problem for Ohio, but this year significant oak wilt centers were reported and verified in the state. The areas affected worst were the Seven Hills area of Cuyahoga County and the Rootstown area in Portage County.

Beech bark disease has not been found as of yet. Beech scale is numerous and easy to find this year in Lake and Geauga Counties. The Holden Arboretum (Lake County) is a place we're watching closely. Beech scale insects are plentiful and beech trees are declining and dying in the arboretum. Trees are being monitored for signs of nectria and sampled for diagnosis if suspicious. This work is being done in cooperation with the arboretum.

Gypsy moth is invading new areas of the state as it moves south and west(Licking, Franklin, Delaware, Muskingum, Coshocton, Noble, Tuscarawas Counties). Entomophaga and NPV were both found killing caterpillar in large numbers in parts of Ohio where gypsy moth has been around for a while. We are monitoring our state forests for gypsy moth activity. Parts of Pike State Forest and Brush Creek State Forest were treated with pheromone flakes as part of Ohio's Slow the spread project.

Pine shoot beetle surveys (APHIS) yielded 17 new quarantine counties in Ohio. This brings the total to 71 out of 88 counties quarantined.



REFORESTATION



Nursery Operations

Ohio's tree seedling sales increased slightly in FY 2000. A total of just under 5.5 million seedlings were sold, generating \$1,169,106 in revenue. A significant portion of the sales resulted from tree planting commitments with American Electric Power Company for their Climate Challenge Tree Planting Program, the Mead Corporation, and the ODNR Division of Reclamation.

Conifers continue to lead sales although there is an increasing interest in hardwoods. Fifty-eight percent of the seedlings sold in FY 2000 were conifers and 42% were hardwoods (primarily oaks, ash, maple, tulip poplar, and walnut).

Design work for the Zanesville Nursery lake and dam improvement project was completed in FY 2000.

2000 Nursery Stock Distribution

SPECIES	MARIETTA	ZANESVILLE	TOTAL
ALDER, BLACK		20,300	20,300
ARBORVITAE	36,150		36,150
ARROWWOOD, SOUTHERN		5,175	5,175
ASH, WHITE		160,275	1 160,275
ASH, GREEN		642,225	642,225
BALDCYPRESS	118,875		118,875
BASSWOOD, AMERICAN		1,450	1,450
BIRCH, RIVER		21,150	21,150
BOXELDER		7,400	7,400
BUCKEYE, OHIO, MISSOURI		4,000	4,000
BUCKEYE, YELLOW		975	975
BUCKEYE, OHIO		7,600	7,600
BUTTERNUT		11,150	11,150
BUTTONBUSH		4,425	4,425
CHESTNUT, CHINESE		1,250	1,250
CHOKEBERRY, BLACK		22,900	22,900
COFFEETREE, KENTUCKY		675	675
CRABAPPLE, AMERICAN		3,175	3,175
CRABAPPLE, SARGENT		4,850	4,850
DOGWOOD, FLOWERING		45,950	45,950
DOGWOOD, SILKY		70,925	70,925
FIR, BALSAM	12,025		12,025
HAWTHORN, WASHINGTON		13,475	13,475
HAZELNUT		9,400	9,400
HEMLOCK, EASTERN	24,150		24,150
HICKORY, SHAGBARK		9,975	9,975
LARCH, EASTERN	3,325		3,325
LOCUST, BRISTLY		17,975	17,975
LOCUST, BLACK		44,900	44,900
SILVER MAPLE		39,600	39,600
MAPLE, SUGAR		2,100	2,100
OAK, BLACK		24,000	24,000
OAK, BUR		55,800	55,800
OAK, BUR (PT)	8,450		8,450
OAK, CHESTNUT		11,200	11,200
OAK, ENGLISH		7,100	7,100
OAK, CHINKAPIN PT	375		375
OAK, CHINKAPIN		5,150	5,150
OAK, PIN		34,300	34,300

SPECIES	MARIETTA	ZANESVILLE	TOTAL
OAK , PIN PT	5,350		5,350
OAK, RED PT	86,550		86,550
OAK, RED	2,975	285,600	288,575
OAK, SAWTOOTH		10,875	10,875
OAK, SHUMARD		40,600	40,600
OAK, SWAMP WHITE		53,525	53,525
OAK, WHITE		67,575	67,575
PAWPAW		7,825	7,825
PERSIMMON		22,700	22,700
PINE, AUSTRIAN	533,475		533,475
PINE, LOBLOLLY	95,600		95,600
PINE, PITCH	1,200		1,200
PINE, PITCH (PT)	10,000		10,000
PINE, PITLOLLY	72,675		72,675
PINE, SCOTCH	15,375		15,375
PINE, SHORTLEAF	2,375		2,375
PINE, VIRGINIA	57,975		57,975
PINE, VIRGINIA (PT)	199,125		199,125
FREE SEEDLING, WP	678,425		678,425
PINE, WHITE (PT)	5,000		5,000
PINE, WHITE	1,170,848		1,170,848
PINE, WHITE 3-0	36,475		36,475
PINE, WHITE (CERTIFIED)	9,925		9,925
PLUM, AMERICAN		26,250	26,250
POPLAR, YELLOW/TULIP		24,775	24,775
REDBUD		36,525	36,525
REDCEDAR, EASTERN	15,475		15,475
ROSE, RUGOSA		5,150	5,150
SERVICEBERRY, THICKET		30,375	30,375
SPRUCE, NORWAY	86,074		86,074
SPRUCE, WHITE	15,000		15,000
SUMAC, SMOOTH		6,350	6,350
SWEETGUM	20,100	35,125	55,225
SYCAMORE	24,250	15,750	40,000
TUPELO, BLACK	3,350		3,350
WALNUT, BLACK		151,575	151,575
WILLOW, BANKERS DWARF		3,875	3,875
WILLOW, STREAMCO		3,300	3,300
TOTAL	3,350,947	2,138,575	5,489,522

Sales By Cooperator Category

Name	Orders	Seedlings
INDIVIDUAL	2,127	1,376,300
4H	18	10,475
DIVISION OF FORESTRY	9	4,375
DIVISION OF NAT' L AREAS	1	3,125
DIVISION OF LITTER	39	17,200
DIVISION OF PARKS	9	4,475
DIVISION OF RECLAMATION	1	550,000
DIVISION OF WILDLIFE	4	71,300
INDUSTRY	27	1,066,350
MEAD	2	150,000
MEAD FREE COOPERATORS	119	678,425
MEAD VO-AG	20	21,500
MUNICIPALITY	1	75
NON-PROFIT	2	8,350
NORTHWEST OHIO	41	30,997
OVER THE COUNTER	21	10,675
OTHER FEDERAL	7	219,900
OTHER GOVERNMENT	68	201,175
OTHER ORGANIZATION	58	98,600
OUT-OF-STATE	143	611,725
SCHOOL/INSTITUTION	34	15,475
SWCD	67	335,525
VO-AG	2	3,500
TOTALS	2,820	5,489,522



Support Services Fiscal Management

Revenues

The Division of Forestry relies on three main sources of revenue for its operations: State General Revenue Funds, monies from the sale of tree seedlings and forest products; and Federal grant assistance, coming primarily from the U.S. Department of Agriculture, Forest Service.

The General Revenue Fund (GRF) appropriation to the Division of Forestry for FY 2000 was \$10,203,524. This accounted for 77% of the year's total revenue receipts.

Tree seedling sales, forest product sales (excluding the sale of standing timber), right-of-way and lease payments, and other miscellaneous State Forest Fund revenues amounted to \$1,530,744. State Forest Fund (Fund 509) revenues accounted for 12% of FY 2000's total revenue.

Federal grant assistance totaled, \$1,112,598 or about 8.5% of the Division's total revenue.

Revenue received from the sale of standing timber in FY 2000 was \$1,392,828. This revenue is deposited in the State's General Revenue Fund and distributed to local governments and school districts in accordance with Section 1503.05 O.R.C. Although the division does not receive any of this revenue for its operations, it is responsible for the collection of the revenue and making the authorized local government and school district payments.

REVENUE SOURCES BY FUND				
FY 00				
Description	GRF	328	509	Other
GRF Appropriation	10,203,524			
Federal Grant Assistance		951,111		
Seedling Sales & Windbreak			1,169,106	
Donations			65,147	290,047
Forest Products*			16,735	
Forestry Fines	1,560		10,710	
Land Leases, Row, Etc.			122,281	
Performance Bonds				57,968
Rent, Residence				9,562
Royalties			7,638	
Salvage (equipment)			57,027	
Services Rendered		161,004	14,444	
Miscellaneous	3,278	483	67,656	152,496
Total Revenues	10,208,362	1,112,598	1,530,744	510,073
Grand Total - All Revenues	13,361,777			

*Excludes Standing Timber Sales Revenue

Expenditures



Division operating expenses totaled \$12,736,911 in FY 2000 and an additional \$1,686,264 was paid out in various forms to local governments (stumpage and mineral royalty payments, fire department reimbursements, and grants). Total FY 2000 expenditures were \$14,423,175.

Seventy-four percent of the total division operating costs were for payroll and other personnel related expenses. Central support charges made up an additional 4.3% of the cost.

Programmatically, expenditures broke out as follows: State Forest Management (52%); Forestry Assistance (22%); Reforestation (14%); and Administration, including I & E, (12%).

**DIVISION OF FORESTRY ANNUAL REPORT
FY 00 EXPENDITURES BY PROGRAM**

	PERSONNEL	MAINTENANCE & EQUIPMENT	PROGRAM TOTAL
STATE FOREST MANAGEMENT			
Forest Operations	2,925,633	767,220	3,692,853
Education & Information	93,627	13,571	107,198
Fire Protection	486,376	41,218	527,594
Resource Management	529,179	68,231	597,410
Law Enforcement	656,213	104,520	760,733
Recreation	326,306	15,368	341,674
Subtotal	5,017,334	1,010,128	6,027,462
REFORESTATION			
Nursery Operations	1,184,620	485,680	1,670,300
Northwest Windbreaks	16,283	1,000	17,283
Subtotal	1,200,903	486,680	1,687,583
FORESTRY ASSISTANCE			
Service Forestry	1,711,932	232,768	1,944,700
Urban Forestry	398,278	42,225	440,503
Forest Health	90,429	3,239	93,668
Forest Industries	36,537	11,898	48,435
Subtotal	2,237,176	290,130	2,527,306
ADMINISTRATION			
Administration	778,980	386,477	1,165,457
Information & Education	128,211	68,219	196,430
Computers & Communication	59,080	541,650	600,730
Central Support	0	531,944	531,944
Subtotal	966,271	1,528,290	2,494,561
Program Totals	9,421,684	3,315,228	12,736,912
SUBSIDY & OTHER PAYMENTS			
Local Grant Awards			74,513
Fire Dept. Payments & Grants			203,764
Stumpage/Royalty Payments			1,407,987
Other Payments Total			1,686,264
Grant Total			14,423,176

Personnel Changes		
Employee	Position	Work Location
NEW HIRES		
John Berg	Nat. Res. Worker	Zanesville
Chad Fisher	Forestry Technician	Gifford
Pamela Martin	Nat. Res. Worker	New Philadelphia
Rodney Neff	Forest Officer 2	New Philadelphia
PROMOTIONS		
Clayton Acord	Equipment Operator 2	Zaleski
Brenda Cooper	Nat. Res. Worker	Marietta
Allen DePriest	Equipment Operator 2	Dean
Doris Griffith	Business Service Officer	Athens
Perry Heslop	Nursery Technician	Marietta
Christopher Kerr	Conservation Aide	Zaleski
Cory Kerr	Equipment Operator 1	Zaleski
PROMOTION AND TRANSFER INTO DIVISION		
Mark Hoffhines	Equipment Operator 1	Mohican from Division of Parks & Recreation
TRANSFERS		
Danny Kirker	Equipment Operator 2	Scioto Trail to ODOT
RETIREMENTS		
Paul Bentley	Asst. Forest Manager	Dean
Donald Kiner	Equipment Operator 1	Mohican
Michael Long	Nat. Res. Admin. 1	Columbus
Opal Miller	Cons. Crew Leader	Marietta
Stanley Richards	District Forest Manager	Shawnee
DISABILITY RETIREMENTS		
James Milliron	Forest Manager 2	Gifford

Information and Education



The Information and Education section continues to support the Division of Forestry's many programs with "hard copy" and "electronic" materials to inform and educate the public about Ohio's forest resources and services available to them. With a staff of only two full time personnel, it is a challenge every day to keep up with the requests for the new and improved items that are so badly needed for projecting a more professional image from the division. The assistance of Cindy Gates and Sue Wintering, as contracted, part-time coordinators for Forestry's State Fair and PLT efforts, continues to free up time for the section personnel to work on their day-to-day duties. Further assistance from Shelia Sheets, Emily Mitchem and Phil Schoendorff has helped this section complete projects that otherwise would not have gotten done.

Forestry field personnel are still the backbone of the I & E efforts. Each year the number of programs presented by division personnel fluctuates based on time availability and hot topics that need addressing. Fire programs were up about 30% this year but forestry programs were down about 50% from FY99. Overall, division programs were down about 28% and media connections were down about 13%.

State Forest crews from Hocking, Zaleski, Tar Hollow and Scioto Trail assisted again providing the pine trees and lumberjack logs for use at the Ohio State Fair. This project takes at least two full crew days from these units and is much appreciated. The Zanesville Nursery crew again provided potted tree seedlings for the fair. The potted trees have become very useful functionally and decoratively. The Division of Parks and Recreation's South Construction crew also donates two days time of their bucket truck and one operator to help us set up and tear down Smokey Bear at the state fair display.

Cindy Gates has completed another State Fair for the Division of Forestry. Her coordination efforts have built upon the existing positive aspects of this event and she has added new and exciting ideas to the whole experience for workers and fair visitors alike. To avoid use of the Information Center countertop, a new supply box was designed and built for the "Smokettes" to keep handout materials, pads and markers out front for their use.

Two television programs were produced this year. The Ohio News Network (ONN) did a segment on *Ohio Fall Colors* and Agricultural Broadcasting Network (ABN) did a segment on *The Forestry Initiative* highlighting low impact logging equipment. Several radio programs were taped or done "live" dealing with Fall Colors, Christmas Trees and Urban Forestry.

The majority of Kim Dobbins' time is spent in meeting the printing demands of the division. Maps and brochures are being used more on the units, at sport shows and during special events. Kim has also participated in the Forest Heritage Festival in Dover, Ohio as well as conducted Project Learning Tree workshops at School Days events.

Smokey Bear memorabilia programs were presented to three different woodland owner groups. Smokey visited Children's Hospital in Columbus each month. He also took part in the "Student of the Month" recognition at Cranbrook Elementary School as part of the department's Adopt-A-School program.

Besides ODNR's Adopt-A-School program, this section assisted the department in the following committees: State Fair committee; ODNR's 50th Anniversary committee; the Ohio Bicentennial Commission's "Forest Legacy" and "Natural Ohio" committees; and is the lead agency for the Fall Color media contacts.

The I & E section presented sessions at the Basic and Advanced COVERTS programs sponsored by OSU Extension, Division of Wildlife and Forestry. Forestry activities were presented to youth and adults at the Governor's residence during Governor and Mrs. Taft's education celebration for their Adopt-A-School and the Big Brothers - Big Sisters of Central Ohio.

Recognition is in order for the Forestry districts that have created events at their unit offices or local sites that promote forestry and the division. Programs like the Hocking Fall Color Tour; the Tar Hollow Mushroom Hunt; Shawnee Forest Field Days; the Forest Heritage Festival; Spring Wildflower Hikes; and others coupled with the bigger shows like the Farm Science Review and the Paul Bunyan Show continue to give the forestry profession opportunities to showcase the many positive aspects of good forest management.

Environmental Education (EE) and Conservation Education (CE) continue to gain prominence on the local, state and national fronts. The USDA Forest Service has created six new CE staff positions to their ranks to address these challenging topics. The Division of Forestry is continuing its commitment to education by sponsoring Project Learning Tree (PLT) in Ohio for the 13th year. This nationally recognized program is one of the best, unbiased programs available to educators and resource personnel for helping students of all ages learn about the environment and their role in it. It is also a proven tool to help students gain the life-long learning skills used in life and tested for on proficiency tests.

As PLT celebrated its 20th year in Ohio, volunteer facilitators across the state conducted 33 workshops for 606 participants. One Facilitator Workshop and one Advanced

Workshops were also conducted with 57 in attendance. In 19 years of workshops, facilitators have conducted 748 workshops with 13,044 persons attending.

PLT-Ohio received three grants this year. A \$10,000.00 Natural Resources Conservation Education (NRCE) pass through grant from the US Forest Service (through the Division of Forestry); a \$14,000.00 US Forest Service "Million for the Millennium" grant in partnership with the Wayne National Forest for workshops in Southeastern Ohio; and a \$16,000.00 grant from the Mead Corporation Foundation to develop a correlation of the PLT activities to the Ohio Learner Outcomes.

Sue Wintering, PLT-Ohio's Program Director, served on the Environmental Education Council of Ohio's (EECO) 2000 Annual Conference Steering Committee. She also presented a workshop session at the conference and had the PLT-Ohio display there. Sue and other PLT-Ohio volunteers assisted the National PLT Staff at the North American Association of Environmental Educators (NAAEE) Convention in Cincinnati.

Ohio was instrumental in helping to develop a six-state and Washington DC cooperative called the Mid Atlantic Conservation Education Cooperative (the MACE). This was done at the urging of the US Forest Service and some State Foresters in this area to try to work cooperatively on mutually beneficial projects and to gain knowledge and information from the members. This could also develop into a stronger constituency group for supporting CE and asking for grant funds. Ohio's CE coordinator has been elected as one of the founding officers and is helping to draw up the Charter and By-Laws for the organization.

The division's website continues to grow in size and popularity. Drew Todd and the OSU server team are doing a great job in keeping this site current and on the cutting edge.

The Ohio Forestry Association is beginning to develop a CDROM about Ohio's Forests. The I & E section is represented on the committee for this project which hopes to have a completed product in early 2001.



AWARDS

ODNR Employee of the Month - October 1999
CLARK CARSON

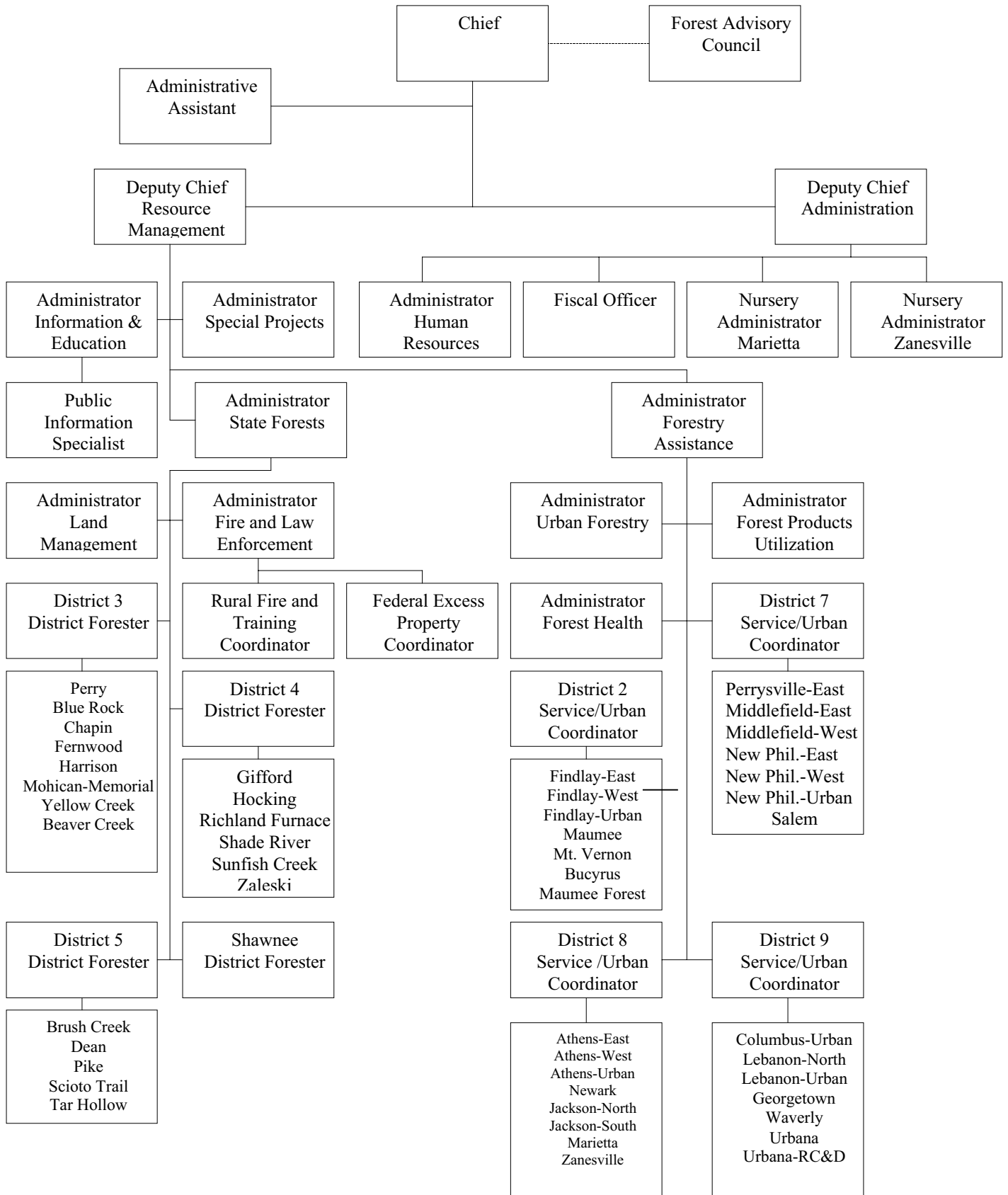
OSAF Outstanding Member - July 1999
BOB BOYLES

National PLT Gold Star Award Winner - May 2000
BILL SCHULTZ

PLT-Ohio's "John Hug" Award - June 2000)
DISTRICT 3 OFFICE

Information & Education Accomplishments Table FY 00	
Type of Program	Total Number of Programs
Forestry Program (Adult)	58
Forestry Program (Youth)	91
Fire Program (Adult)	44
Fire Program (Youth)	112
Tours	0
Career Days	38
Field Days	41
Displays/Exhibits	35
Newspaper Articles	72
Radio Programs/Spots	92
TV Program/Spots	17
Fairs	11
Parades	18
Fire Dept. Association Meetings	76
Fire Dept. Contacts	883
Court Visitations	160
Law Enforcement/Visitor Assists	9,019
Special I & E	20
Project Learning Tree Activities (days)	19
Other	0
Trainings Given (days)	81
Training Received (days)	318

Table of Organization
(As of 6/30/99)



Appendix A

ODNR FORESTRY INITIATIVE

Summary

(Presented by Director Speck to the Ohio Forestry Association's
Annual Meeting, 2/26/00)



“Raising The Bar” In Cooperation With Loggers

- ▲ ODNR, Division of Forestry (DOF) will encourage more loggers to become certified through the Ohio Forestry Association (OFA).
- ▲ DOF and Division of Wildlife will use only Certified Loggers on Division logging & clearing projects over 5 acres on lands they control. The Divisions of Mines and Reclamation, and Oil and Gas will consider rule changes to require Certified Loggers on mining and oil and gas land clearing operations larger than 5 acres.
- ▲ DOF will require that logging companies post a sign identifying their company on State Forest harvest operations.
- ▲ DOF Service Foresters will offer silvicultural training to loggers, a program started last year. Classes will qualify for continuing education credits in the Certified Logger Program.



“Raising the Bar” in Cooperation with Forest Landowners

- ▲ DOF will revise the Forest Tax Law (OFTL) Rules to require that only certified loggers be used for harvesting.
- ▲ DOF, after consultation with woodland owner groups, will consider two additional OFTL proposals:
 - ▲ Required training for landowners during their first five years in the program
 - ▲ Require harvest operations be set up and administered by a Certified Forester
- ▲ DOF will encourage small woodland owners to explore the viability of co-ops for woodland management.
- ▲ DOF will support and encourage the “Forester First” concept with Ohio woodland owners.

- ▲ As a separate effort, DOF, after consultation with woodland owner groups, will work to combine the treatment of forestlands under the Current Agricultural Use Value (CAUV) and Ohio Forest Tax Law (OFTL) programs into one tax law program, with a single set of rules. *



“Raising The Bar” For Reforestation

- ▲ ODNR will encourage the reforestation of mined lands through alternative reclamation practices and “Carbon Credit” incentives.
- ▲ ODNR is coordinating and promoting Governor Taft’s Bicentennial Tree Legacy Program to plant an additional 2 million trees by 2003. *



“Raising The Bar” To Support Forestry

- ▲ With funding secured through the efforts of OFA, DOF will create 2 new Service Forestry positions, one in Lebanon, the other in Findlay. *
- ▲ DOF will alter Service Forestry project boundaries, with an emphasis on locating a Service Forester in Belmont County, to address particular land-management practices in that county. *
- ▲ DOF will fill the vacant Forest Products Utilization Administrator position created by the retirement of Mike Long.



“Raising The Bar” To Support Low Impact Logging

- ▲ DOF will designate a portion of State Forest harvests each year to be completed by loggers using “Low Impact” equipment.
- ▲ DOF will explore with the Ohio Environmental Protection Agency the development of a “Linked Deposit” program to provide low-interest loans to loggers for the purchase of “Low-Impact” machinery. *
- ▲ DOF District 3 (New Philadelphia) will continue experimental use of vegetable-based hydraulic fluids in light and heavy equipment.



“Raising the Bar” for Prescribed Fire

- ▲ DOF, in cooperation with Ohio’s prescribed burners, will develop a Certified Fire Manager Program for those who use prescribed fire as a management tool. *



“Raising the Bar” for Improved Forest Data

- ▲ DOF, in cooperation with the US Forest Service, will begin work on an annual Forest Inventory and Analysis, starting next year. As part of this, DOF will start a new Forest Health Monitoring Program.

* = **Emphasis item for DOF**

3/3/2000